

# Hampshire Water Transfer and Water Recycling Project Environmental Statement - Figure 11.3 Bedrock geology of the study area

**VOLUME NUMBER: 6**

**PLANNING INSPECTORATE SCHEME NUMBER: WA010002**

**APPLICATION DOCUMENT REFERENCE: 6.3**

**APFP REGULATION: 5(2)(a)**

May 2026

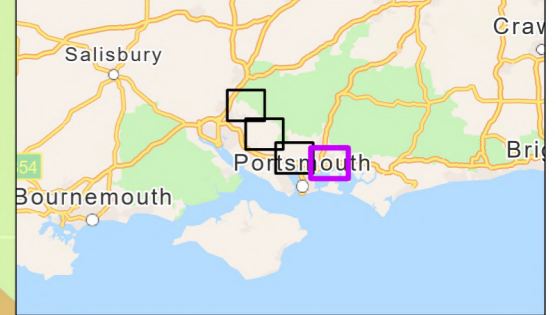
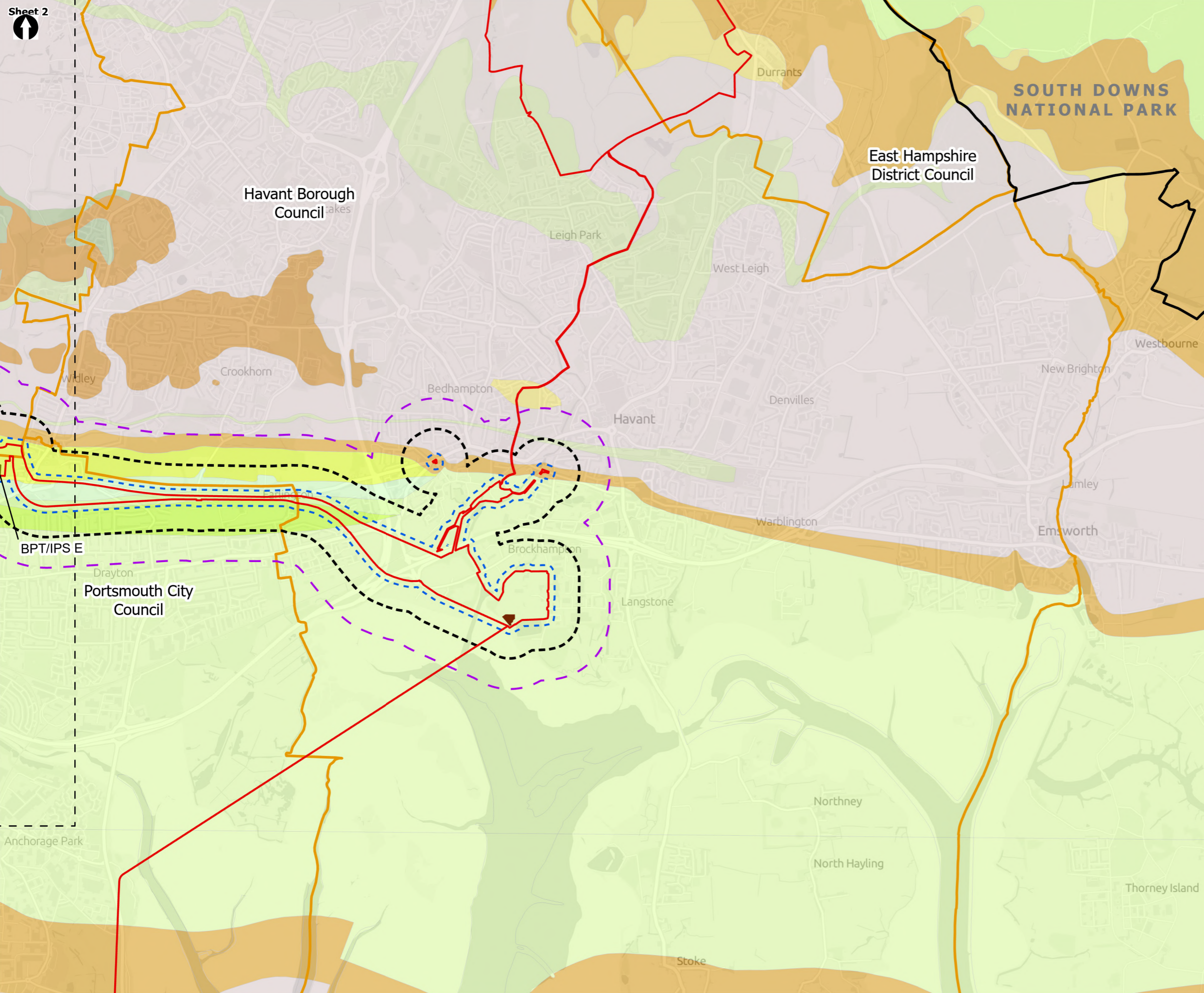
Version 0



from  
**Southern  
Water** 

The Southern Water logo consists of three stylized, wavy blue lines of varying lengths, positioned to the right of the text 'Southern Water'.





**Order Limits**

- Sheet Extent Boxes 1:30K
- National Parks
- Local planning authorities
- Limits of Deviation for Budds Farm Pumping Station

**Study Areas**

- 50m Study Area
- 250m Study Area
- 500m Study Area

**Bedrock Geology 1:50000**

- Lambeth Group - Clay, Silt and Sand
- Tarrant Chalk Member - Chalk
- London Clay Formation - Sand
- London Clay Formation - Clay, Silt and Sand
- Lambeth Group - Sand
- Bognor Sand Member - Sand
- Wittering Formation - Sand, Silt and Clay
- Wittering Formation - Sand
- Whitecliff Sand Member - Sand
- Portsdown Chalk Formation - Chalk
- Lewes Nodular, Seaford, Newhaven, Culver, Portsdown Chalk Formation
- Newhaven Chalk Formation
- Spetisbury Chalk Member - Chalk
- Lambeth Group - Clay, Silt and Sand
- Earnley Sand Formation - Sand, Silt, and Clay
- Seaford Chalk Formation - Chalk
- Durnley Sand Member - Sand
- Lewes Nodular Chalk Formation - Chalk
- Culver Chalk Formation - Chalk
- Nursling Sand Member - Clay, Silt and Sand
- Whitecliff Sand Member - Sand and Gravel
- Portsmouth and Whitecliff Sand Member - Sand

**Above Ground Plant**

- Break Pressure Tank & Intermediate Pumping Station

Coordinate system: British National Grid; Datum: OSGB 1936  
 Data sources: © Crown copyright and database rights 2026 Ordnance Survey 0100031673. Reproduced with the permission of the British Geological Survey.  
 Contains OS data © Crown Copyright and database right 2026  
 Contains data from OS Zoomstack. Sources: Esri, TomTom, Garmin, FAO, NOAA, USGS, © OpenStreetMap contributors, and the GIS User Community.

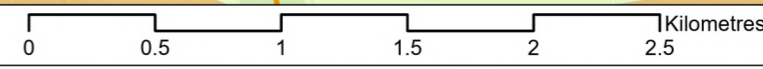
PROJECT TITLE  
 Hampshire Water Transfer and Water Recycling Project

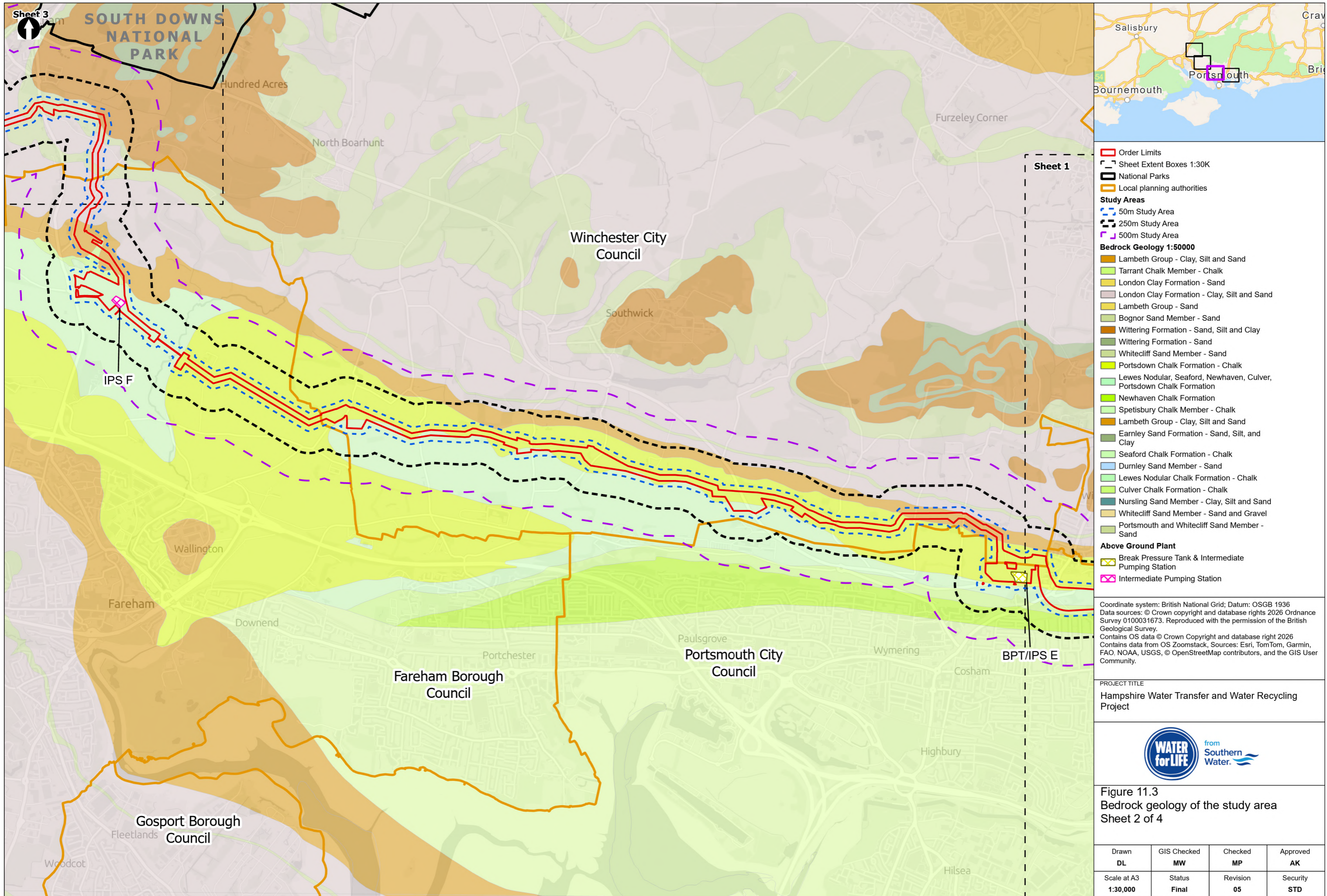


Figure 11.3  
 Bedrock geology of the study area  
 Sheet 1 of 4

Drawn <b>DL</b>	GIS Checked <b>MW</b>	Checked <b>MP</b>	Approved <b>AK</b>
Scale at A3 <b>1:30,000</b>	Status <b>Final</b>	Revision <b>05</b>	Security <b>STD</b>

Drawing Number  
**PC5223-RHD-ES-ZZ-D-Z-0011**





**Order Limits**  
 Sheet Extent Boxes 1:30K  
 National Parks  
 Local planning authorities

**Study Areas**  
 50m Study Area  
 250m Study Area  
 500m Study Area

**Bedrock Geology 1:50000**

- Lambeth Group - Clay, Silt and Sand
- Tarrant Chalk Member - Chalk
- London Clay Formation - Sand
- London Clay Formation - Clay, Silt and Sand
- Lambeth Group - Sand
- Bognor Sand Member - Sand
- Wittering Formation - Sand, Silt and Clay
- Wittering Formation - Sand
- Whitecliff Sand Member - Sand
- Portsdown Chalk Formation - Chalk
- Lewes Nodular, Seaford, Newhaven, Culver, Portsdown Chalk Formation
- Newhaven Chalk Formation
- Spetsbury Chalk Member - Chalk
- Lambeth Group - Clay, Silt and Sand
- Earnley Sand Formation - Sand, Silt, and Clay
- Seaford Chalk Formation - Chalk
- Durnley Sand Member - Sand
- Lewes Nodular Chalk Formation - Chalk
- Culver Chalk Formation - Chalk
- Nursling Sand Member - Clay, Silt and Sand
- Whitecliff Sand Member - Sand and Gravel
- Portsmouth and Whitecliff Sand Member - Sand

**Above Ground Plant**

- Break Pressure Tank & Intermediate Pumping Station
- Intermediate Pumping Station

Coordinate system: British National Grid; Datum: OSGB 1936  
 Data sources: © Crown copyright and database rights 2026 Ordnance Survey 0100031673. Reproduced with the permission of the British Geological Survey.  
 Contains OS data © Crown Copyright and database right 2026  
 Contains data from OS Zoomstack. Sources: Esri, TomTom, Garmin, FAO, NOAA, USGS, © OpenStreetMap contributors, and the GIS User Community.

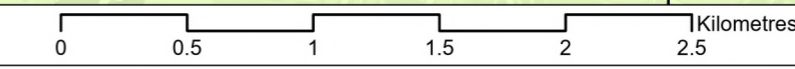
**PROJECT TITLE**  
 Hampshire Water Transfer and Water Recycling Project



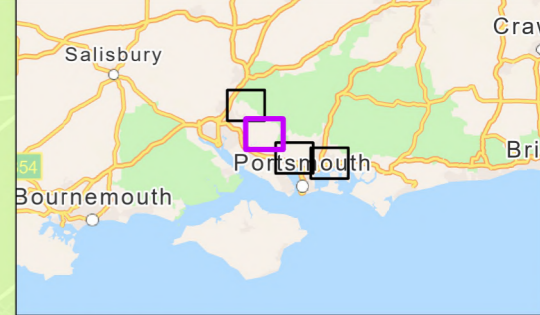
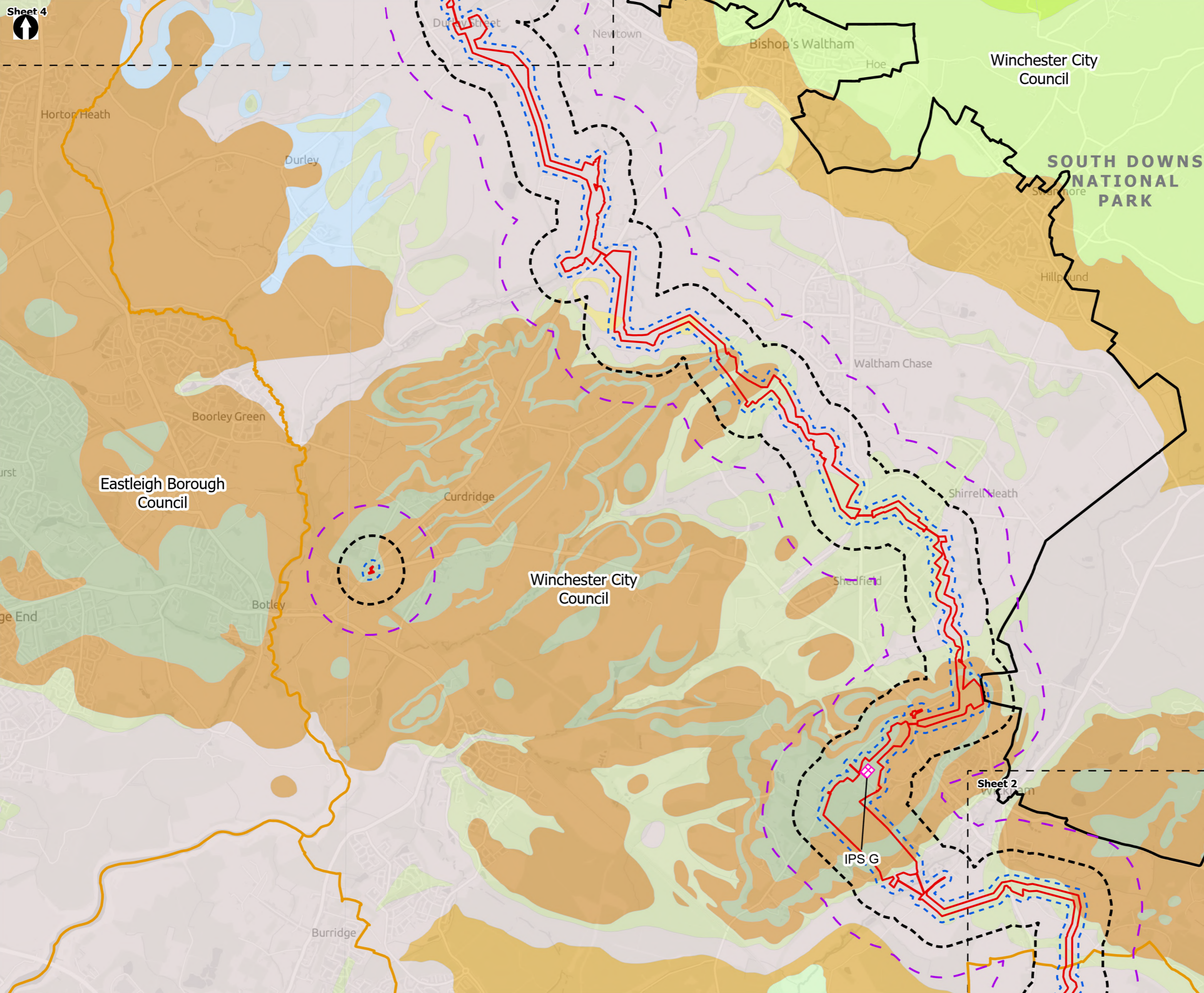
**Figure 11.3**  
 Bedrock geology of the study area  
 Sheet 2 of 4

Drawn <b>DL</b>	GIS Checked <b>MW</b>	Checked <b>MP</b>	Approved <b>AK</b>
Scale at A3 <b>1:30,000</b>	Status <b>Final</b>	Revision <b>05</b>	Security <b>STD</b>

© Southern Water 2026  
 This document is issued for the party which commissioned it and for specific purposes connected with the captioned project only. It should not be relied upon by any other party or used for any other purpose.  
 We accept no responsibility for the consequences of this document being relied upon by any other party, or being used for any other purpose, or containing any error or omission which is due to an error or omission in data supplied to us by other parties.



Drawing Number  
**PC5223-RHD-ES-ZZ-D-Z-0011**



- Order Limits
- Sheet Extent Boxes 1:30K
- National Parks
- Local planning authorities
- Study Areas**
- 50m Study Area
- 250m Study Area
- 500m Study Area
- Bedrock Geology 1:50000**
- Lambeth Group - Clay, Silt and Sand
- Tarrant Chalk Member - Chalk
- London Clay Formation - Sand
- London Clay Formation - Clay, Silt and Sand
- Lambeth Group - Sand
- Bognor Sand Member - Sand
- Wittering Formation - Sand, Silt and Clay
- Wittering Formation - Sand
- Whitecliff Sand Member - Sand
- Portsdown Chalk Formation - Chalk
- Lewes Nodular, Seaford, Newhaven, Culver, Portsdown Chalk Formation
- Newhaven Chalk Formation
- Spetisbury Chalk Member - Chalk
- Lambeth Group - Clay, Silt and Sand
- Earnley Sand Formation - Sand, Silt, and Clay
- Seaford Chalk Formation - Chalk
- Durnley Sand Member - Sand
- Lewes Nodular Chalk Formation - Chalk
- Culver Chalk Formation - Chalk
- Nursling Sand Member - Clay, Silt and Sand
- Whitecliff Sand Member - Sand and Gravel
- Portsmouth and Whitecliff Sand Member - Sand
- Above Ground Plant**
- Intermediate Pumping Station

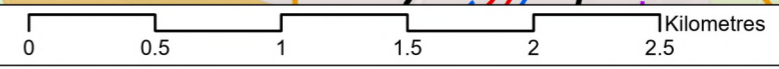
Coordinate system: British National Grid; Datum: OSGB 1936  
 Data sources: © Crown copyright and database rights 2026 Ordnance Survey 0100031673. Reproduced with the permission of the British Geological Survey.  
 Contains OS data © Crown Copyright and database right 2026  
 Contains data from OS Zoomstack. Sources: Esri, TomTom, Garmin, FAO, NOAA, USGS, © OpenStreetMap contributors, and the GIS User Community.

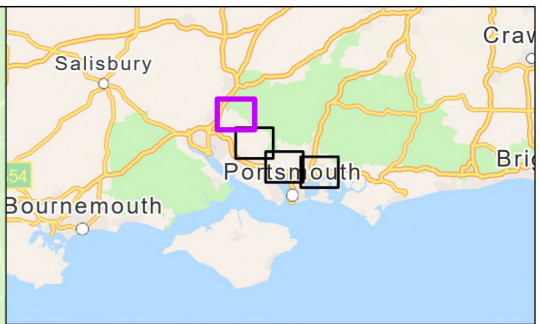
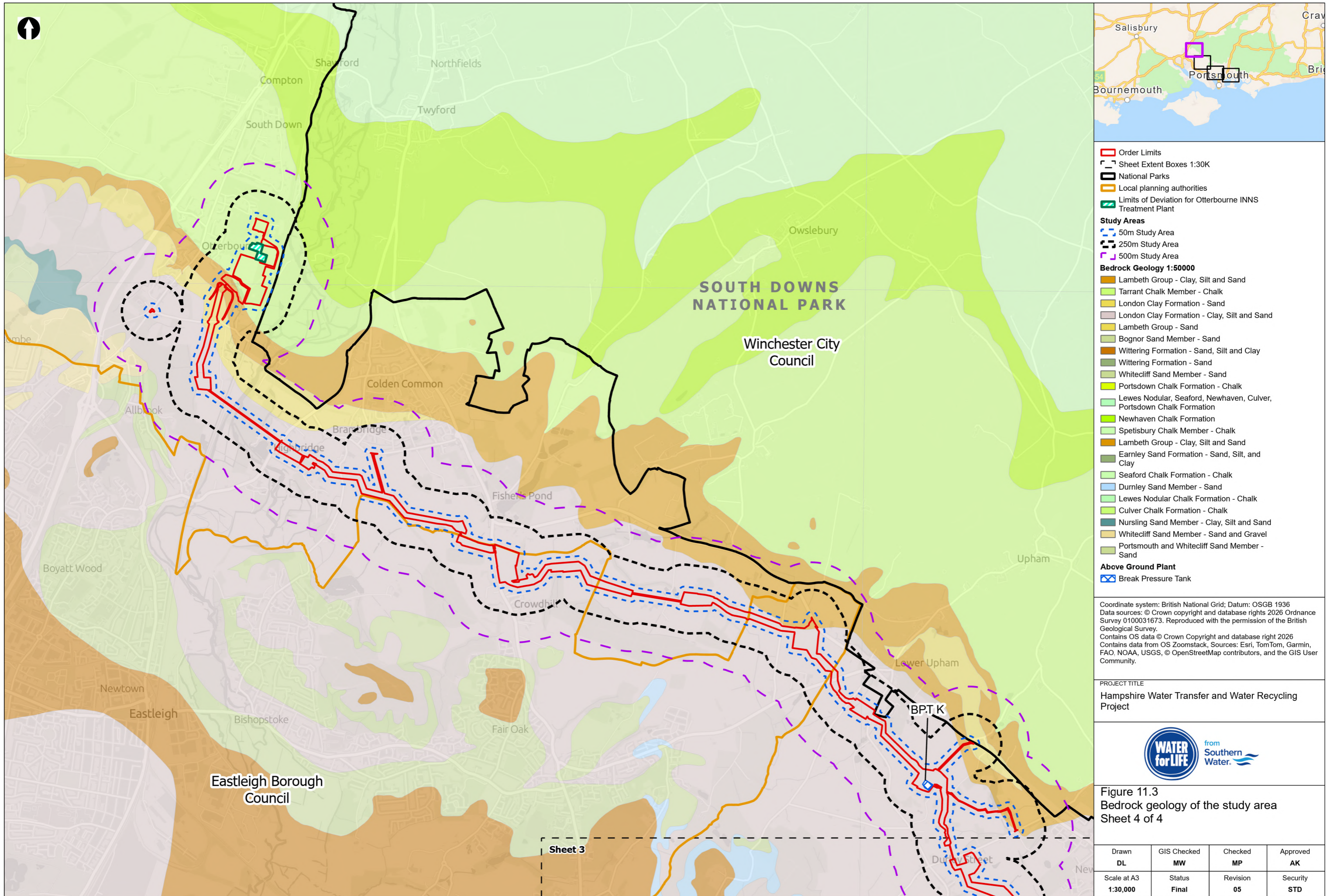
PROJECT TITLE  
 Hampshire Water Transfer and Water Recycling Project



Figure 11.3  
 Bedrock geology of the study area  
 Sheet 3 of 4

Drawn DL	GIS Checked MW	Checked MP	Approved AK
Scale at A3 1:30,000	Status Final	Revision 05	Security STD





- Order Limits
- Sheet Extent Boxes 1:30K
- National Parks
- Local planning authorities
- Limits of Deviation for Otterbourne INNS Treatment Plant
- Study Areas**
- 50m Study Area
- 250m Study Area
- 500m Study Area
- Bedrock Geology 1:50000**
- Lambeth Group - Clay, Silt and Sand
- Tarrant Chalk Member - Chalk
- London Clay Formation - Sand
- London Clay Formation - Clay, Silt and Sand
- Lambeth Group - Sand
- Bognor Sand Member - Sand
- Wittering Formation - Sand, Silt and Clay
- Wittering Formation - Sand
- Whitecliff Sand Member - Sand
- Portsdown Chalk Formation - Chalk
- Lewes Nodular, Seaford, Newhaven, Culver, Portsdown Chalk Formation
- Newhaven Chalk Formation
- Spetsbury Chalk Member - Chalk
- Lambeth Group - Clay, Silt and Sand
- Earnley Sand Formation - Sand, Silt, and Clay
- Seaford Chalk Formation - Chalk
- Durnley Sand Member - Sand
- Lewes Nodular Chalk Formation - Chalk
- Culver Chalk Formation - Chalk
- Nursling Sand Member - Clay, Silt and Sand
- Whitecliff Sand Member - Sand and Gravel
- Portsmouth and Whitecliff Sand Member - Sand
- Above Ground Plant**
- Break Pressure Tank

Coordinate system: British National Grid; Datum: OSGB 1936  
 Data sources: © Crown copyright and database rights 2026 Ordnance Survey 0100031673. Reproduced with the permission of the British Geological Survey.  
 Contains OS data © Crown Copyright and database right 2026  
 Contains data from OS Zoomstack. Sources: Esri, TomTom, Garmin, FAO, NOAA, USGS, © OpenStreetMap contributors, and the GIS User Community.

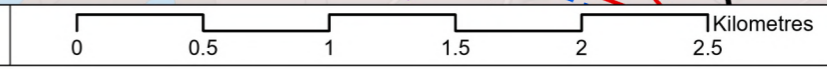
PROJECT TITLE  
 Hampshire Water Transfer and Water Recycling Project



Figure 11.3  
 Bedrock geology of the study area  
 Sheet 4 of 4

Drawn <b>DL</b>	GIS Checked <b>MW</b>	Checked <b>MP</b>	Approved <b>AK</b>
Scale at A3 <b>1:30,000</b>	Status <b>Final</b>	Revision <b>05</b>	Security <b>STD</b>

© Southern Water 2026  
 This document is issued for the party which commissioned it and for specific purposes connected with the captioned project only. It should not be relied upon by any other party or used for any other purpose.  
 We accept no responsibility for the consequences of this document being relied upon by any other party, or being used for any other purpose, or containing any error or omission which is due to an error or omission in data supplied to us by other parties.



Drawing Number  
**PC5223-RHD-ES-ZZ-D-Z-0011**